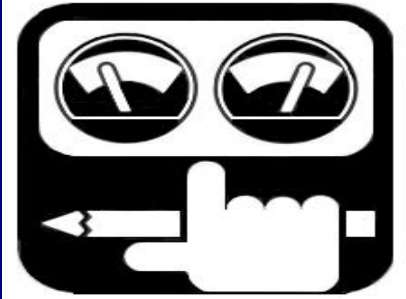




Excavator PM Tune-up



Features & Benefits:

- Guaranteed price *
- Recommended annual maintenance
- Maintain peak performance
- Reduced unscheduled downtime
- Maintain original performance specs

Repair Indicators:

- 2000 machine hours
- Machine performance
- PM Schedule

Always repair before failure!

Included in PM Tune-up:

- ◆ Per Komatsu's testing & adjustment procedures, the following will be completed where required:
- ◆ Standard Value check & adjustment of engine speed at 9 different system conditions.
- ◆ Measure & record 13 different cycle times.
- ◆ Measure & adjust pilot oil pressure.
- ◆ Measure & adjust main relief pressures at 10 different system conditions.
- ◆ Check & adjust the following:
 - Closed Center Systems
LS EPC output pressure
Servo input pressure
PC EPC output pressure
PC valve adjustment
LS differential pressure
 - Open Center Systems
Pilot Control Pressure
TVC Pressure
NC Pressure
CO Pressure
Jet Sensor Differential

Available at Additional Cost:

- 2000 Hour Engine Tune-up.
- Scheduled lube & filter maintenance.
- Annual machine inspection.
- Any parts or repairs not listed.

Associated Components

- Hydraulic cylinder repair.
- Hydraulic pump repair.
- Bucket linkage repair.
- A completed copy of the Komatsu PM Tune-up Data Sheet is included. All checks and adjustments are recorded for your records.

Model:

